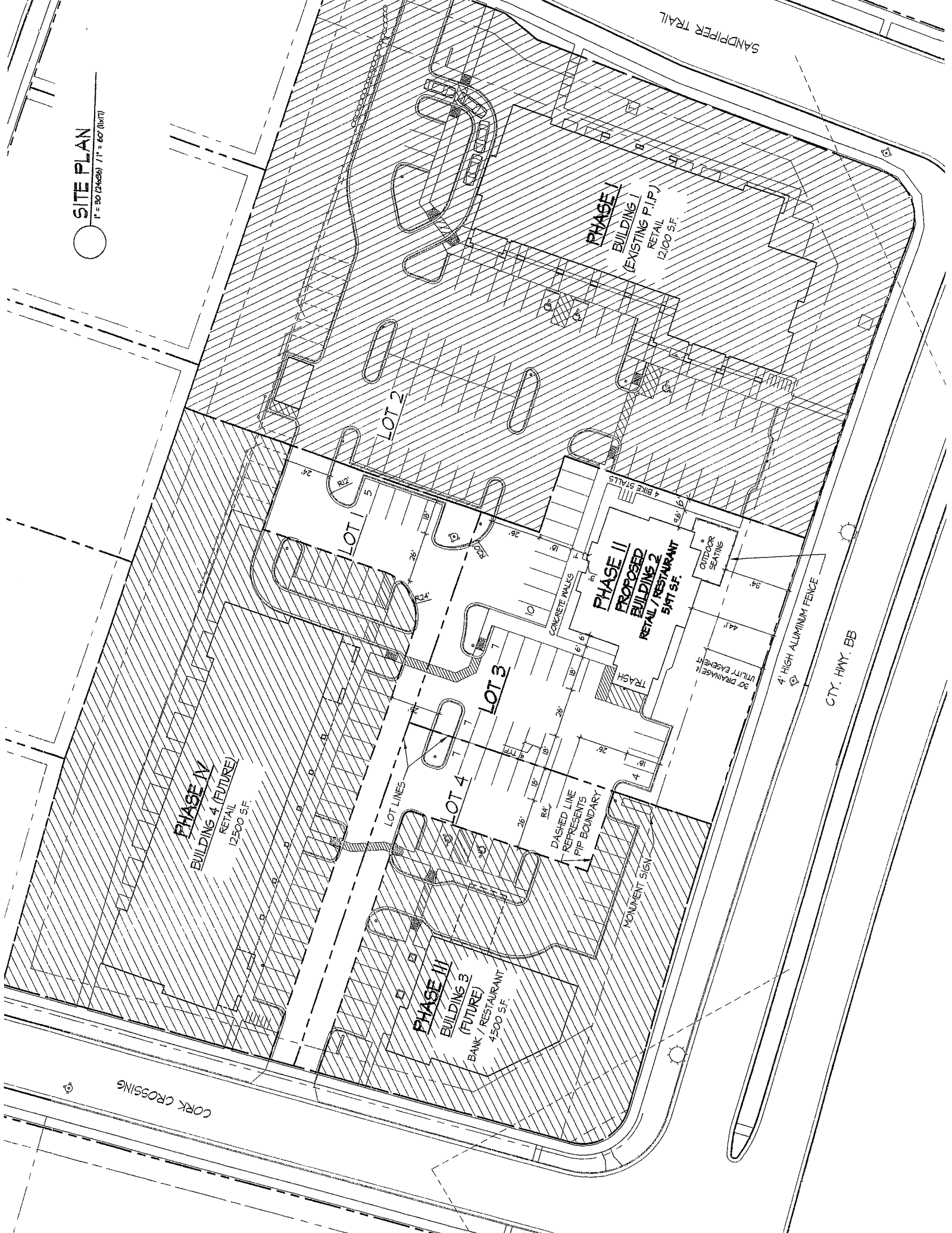


**SITE PLAN**

1" = 30' (24x36) 7/16" = 60" (HWT)



SANDPIPER TRAIL

**PHASE I**  
BUILDING 1  
(EXISTING P.I.P.)  
RETAIL  
12,100 SF.

**PHASE II**  
PROPOSED  
BUILDING 2  
RETAIL / RESTAURANT  
5,471 SF.

**PHASE IV**  
BUILDING 4 (FUTURE)  
RETAIL  
12,500 SF.

**PHASE III**  
BUILDING 3  
(FUTURE)  
BANK / RESTAURANT  
4,500 SF.

LOT 2

LOT 5

LOT 3

LOT 4

CORK CROSSING

CITY HWY. BB

4' HIGH ALUMINUM FENCE

MONUMENT SIGN

DASHED LINE  
REPRESENTS  
PIP BOUNDARY

FLASH

CONCRETE WALKS

4 BIKE STALLS

OUTDOOR SEATING

UTILITY EASEMENT

30' DRAINAGE

# PLANT SCHEDULE

key	Common name	size	root cond.	quant.
CE	Cathedral Elm	2 1/2" Cal.	BB	3
FM	Autumn Blaze Maple	2 1/2" Cal.	BB	2
HO	Shademaster Honeylocust	2 1/2" Cal.	BB	3
SV	Spring Red Viburnum	24"	BB	3
CB	Iroquois Beauty Chokeberry	18"	CONT.	25
DB	Dwarf Bush Honeysuckle	12"	CONT.	8
SN	Norman Spirea	18"	CONT.	7
CS	Goldflame Spirea	18"	CONT.	12
SB	White Hedge Snowberry	24"	BR	5
SJ	Sea Green Juniper	18"	CONT.	5
JH	Hughes Juniper	18"	CONT.	
RC	Russian Cypress	18" Wi.	CONT.	19

