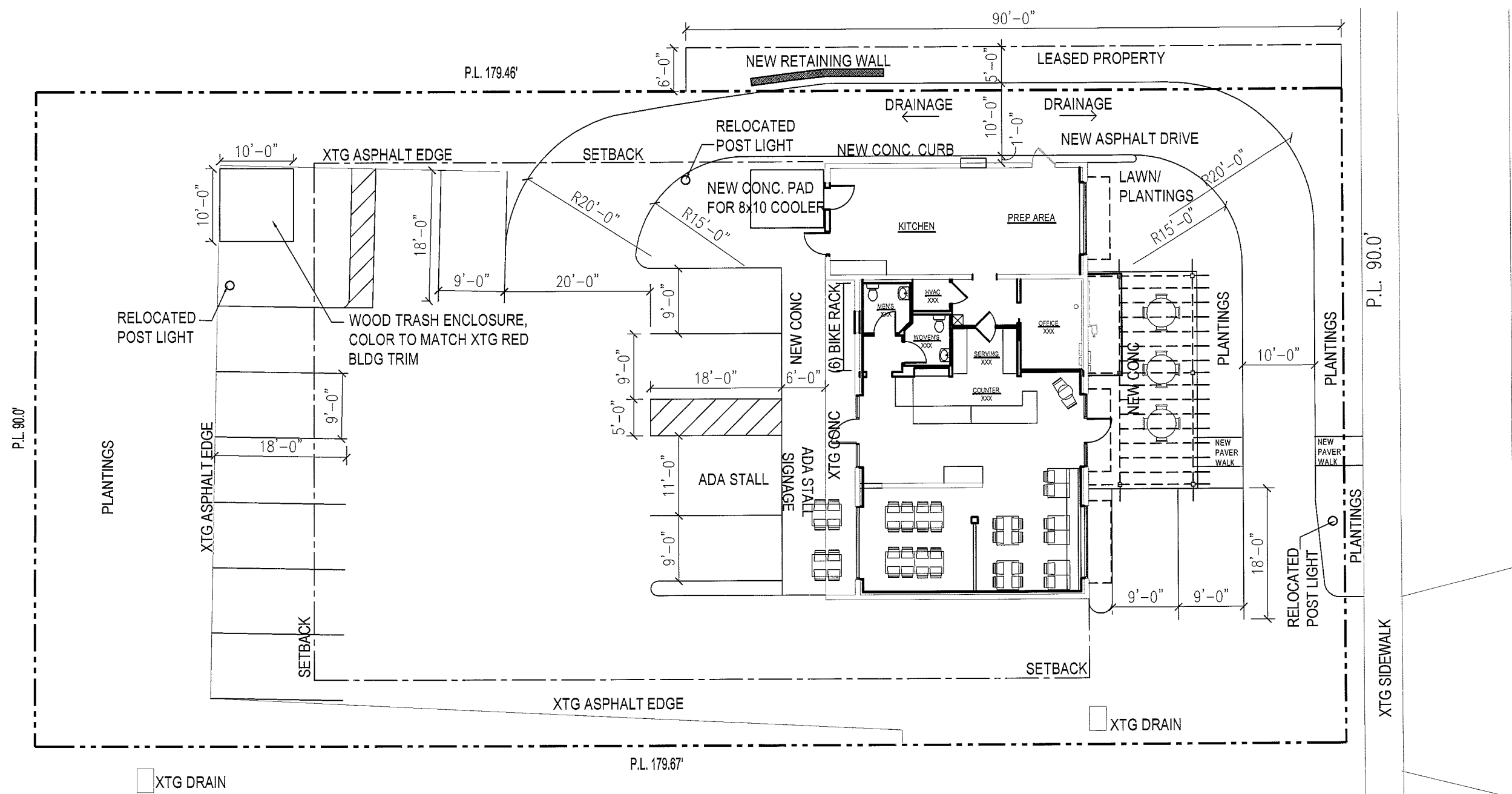


PAPA JIMMYS PIZZERIA
SITE PLAN SUBMITTAL
224 W. COTTAGE GROVE ROAD
COTTAGE GROVE, WI

PROJECT:

NUMBER:	000000.00
DATE:	08.07.09
REV:	---
---	---

SHEET:
A-2

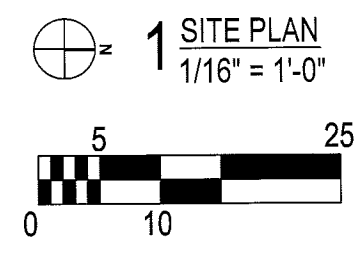


PROPERTY DESCRIPTION

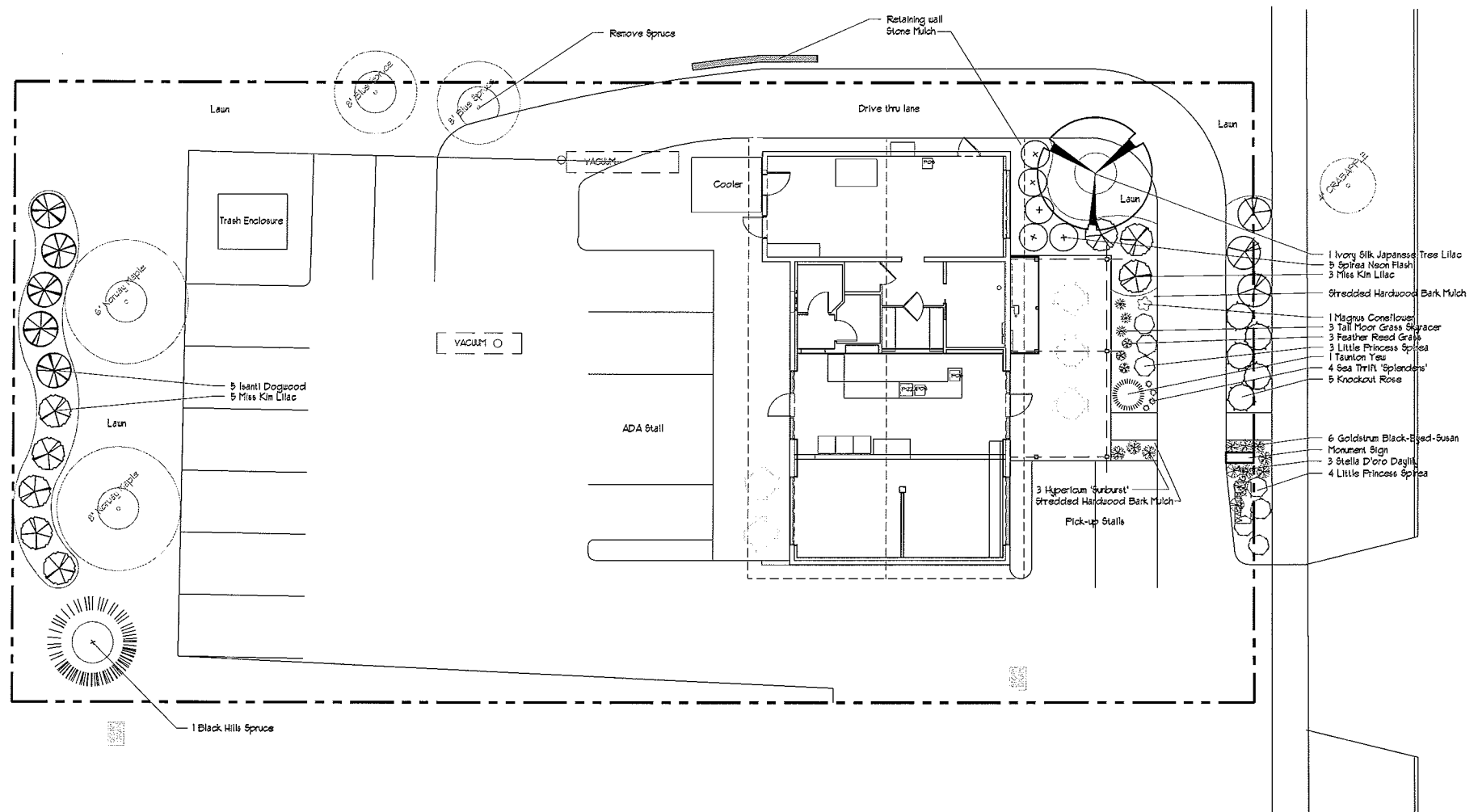
ACRES: .371
SEC 09, T 07 N, R 11 E, NE 1/4 OF SW 1/4
PLAT: 215300-SELDAL PLAT-2ND ADDITION
BLOCK: LOT 74

GENERAL NOTES

- INTERIOR SEATING FOR 38 = 12.6 PARKING STALLS.
- (6) BIKE STALLS
- TOTAL SITE AREA = 16,136 SF
 - XTG IMPERVIOUS AREA = 12,115 SF
 - PROPOSED IMPERVIOUS AREA = 12,241 SF
 - PROPOSED LANDSCAPED AREA = 500 SF + (1,961 SF REAR LOT LINE BUFFER PLANTINGS.)
- SITE DRAINAGE TO REMAIN THE SAME AS EXISTING ON NORTH, SOUTH AND EAST SIDES OF BUILDING. SEE PLAN FOR WEST DRAINAGE.



LANDSCAPE PLAN
PAPA JIMMY'S
 COTTAGE GROVE, WISCONSIN



Village of Cottage Grove
 Landscape Point Requirements

	Proposed	Points Required
40 Points per 100 linear feet of building foundation	182 LF	71
40 Points per 100 linear feet of street frontage	90 LF	36
20 Points per 1000 square feet of paved area	9200 SF	14
10 Points per 1000 square feet of gross floor area	1982 GFA	20
Total Landscape Points Required		201

Plant and Point List

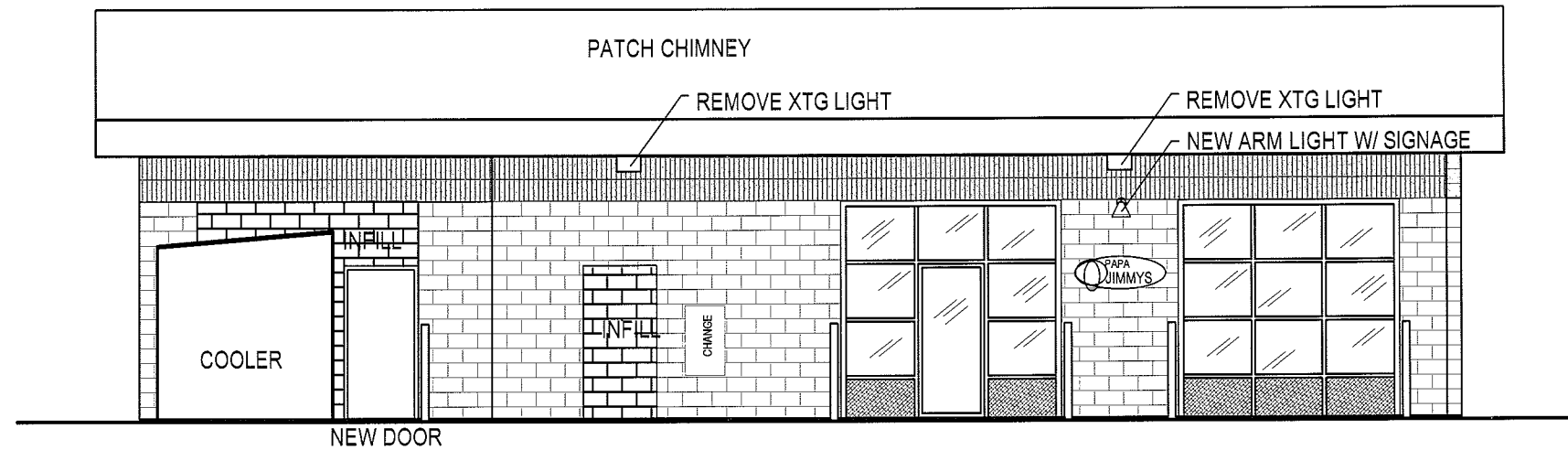
Quantity	Planting Size	Scientific Name	Common Name	Points	Total Points
Canopy Trees					
2	Existing	Acer platanoides	Norway Maple	15	15
1	2' BB	Syringa reticulata 'Ivory Silk'	Ivory Silk Japanese Tree Lilac	15	15
Low Deciduous Tree					
1	Existing	Malus	Crabapple	15	15
Medium Deciduous Shrub					
8	2-3'	Syringa patula 'Miss Kin'	Miss Kin Lilac	3	24
5	3'	Cornus sericea 'Isanti'	Isanti Dogwood	3	15
3	3'	Aronia melanocarpa 'Brilliantissima'	Glossy Black Chokeberry	3	9
Low Deciduous Shrub					
5	15-18'	Spiraea bumalda 'Neon Flash'	Spiraea Neon Flash	1	5
1	12-15'	Spiraea japonica 'Little Princess'	Little Princess Spiraea	1	1
5	2 Gal	Rosa 'Knockout'	Knockout Rose	1	5
Medium Evergreen Shrub					
1	15'	Taxus media 'Taunton'	Taunton Yew	5	5
Evergreen Tree					
1	Existing	Picea pungens	Colorado Blue Spruce	40	40
1	6'	Picea glauca densata	Black Hills Spruce	40	40
Perennials					
4	45"	Ameria natiflora 'Splendens'	Sea Thrift	0	0
3	45"	Calamagrostis x Karl Foerster	Feather Reed Grass	0	0
1	4' pot	Echinacea purpurea 'Magnus'	Magnus Coneflower	0	0
3	4' Pot	Hemerocallis 'Stella D'oro'	Stella D'oro Daylily	0	0
3	1-Gal	Molinia arundinacea 'Skyracer'	Tall Moor Grass Skyracer	0	0
6	45" Pot	Rudbeckia hirta 'Goldstrum'	Goldstrum Black-Eyed-Susan	0	0
				Total Landscape Points on Plan	330

NOTES:
 1. All plant beds to be edged with black vinyl edging.
 2. Plant beds to be mulched with 2" washed stone and weed barrier where noted.
 3. Perennial plantings to be mulched with shredded hardwood bark where noted.
 4. Trees planted in leun areas to receive a 3' deep, 6' diameter shredded hardwood mulch ring.
 5. Contractor is responsible for verifying all plant quantities. Plan shall preside over the plant list.

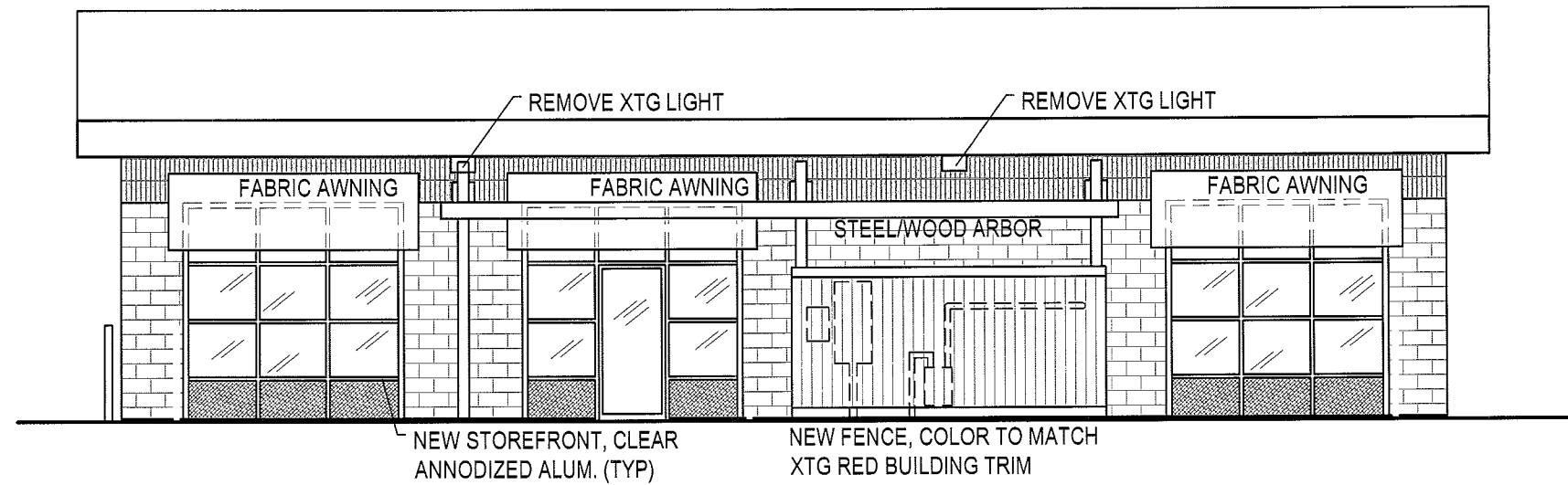
NORTH

SCALE 1" = 10'-0"

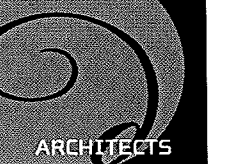
DATE 1.31.09
 DESIGN Kam
 REVISION



2 REAR ELEVATION
1/8" = 1'-0"



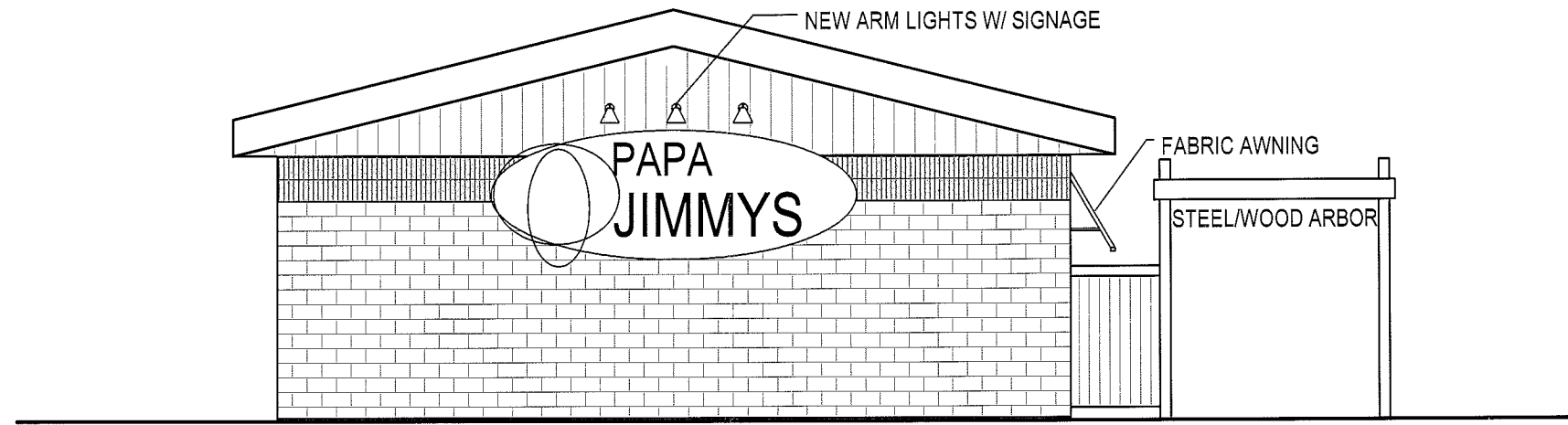
1 REAR ELEVATION
1/8" = 1'-0"



PAPA JIMMYS PIZZERIA
SITE PLAN SUBMITTAL
224 W. COTTAGE GROVE ROAD
COTTAGE GROVE, WI

PROJECT:	
NUMBER:	000000.00
DATE:	08.07.09
REV:	---
---	---
---	---

SHEET:
A-3



2 EAST ELEVATION
1/8" = 1'-0"



1 WEST ELEVATION
1/8" = 1'-0"

222 West Washington Ave. Suite 310 Madison, WI 53703

ph: 608.268.1499 fax: 608.268.1498
www.destreedesign.com

DESTREE DESIGN ARCHITECTS HOLDS ALL RIGHTS INCLUDING THE COPYRIGHT OF THIS DOCUMENT. AS WELL AS THE CONCEPTS AND DESIGNS INCORPORATED HEREIN AS AN INSTRUMENT OF SERVICE. AS PROPERTY OF DESTREE DESIGN ARCHITECTS IT IS NOT TO BE COPIED, DISTRIBUTED, OR USED IN WHOLE OR PART WITHOUT THE EXPRESS WRITTEN CONSENT OF DESTREE DESIGN ARCHITECTS.

PAPA JIMMYS PIZZERIA
SITE PLAN SUBMITTAL
224 W. COTTAGE GROVE ROAD
COTTAGE GROVE, WI

PROJECT:	
NUMBER:	000000.00
DATE:	08.07.09
REV:	---
---	---
---	---

SHEET:
A-4