

Consultant

Notes

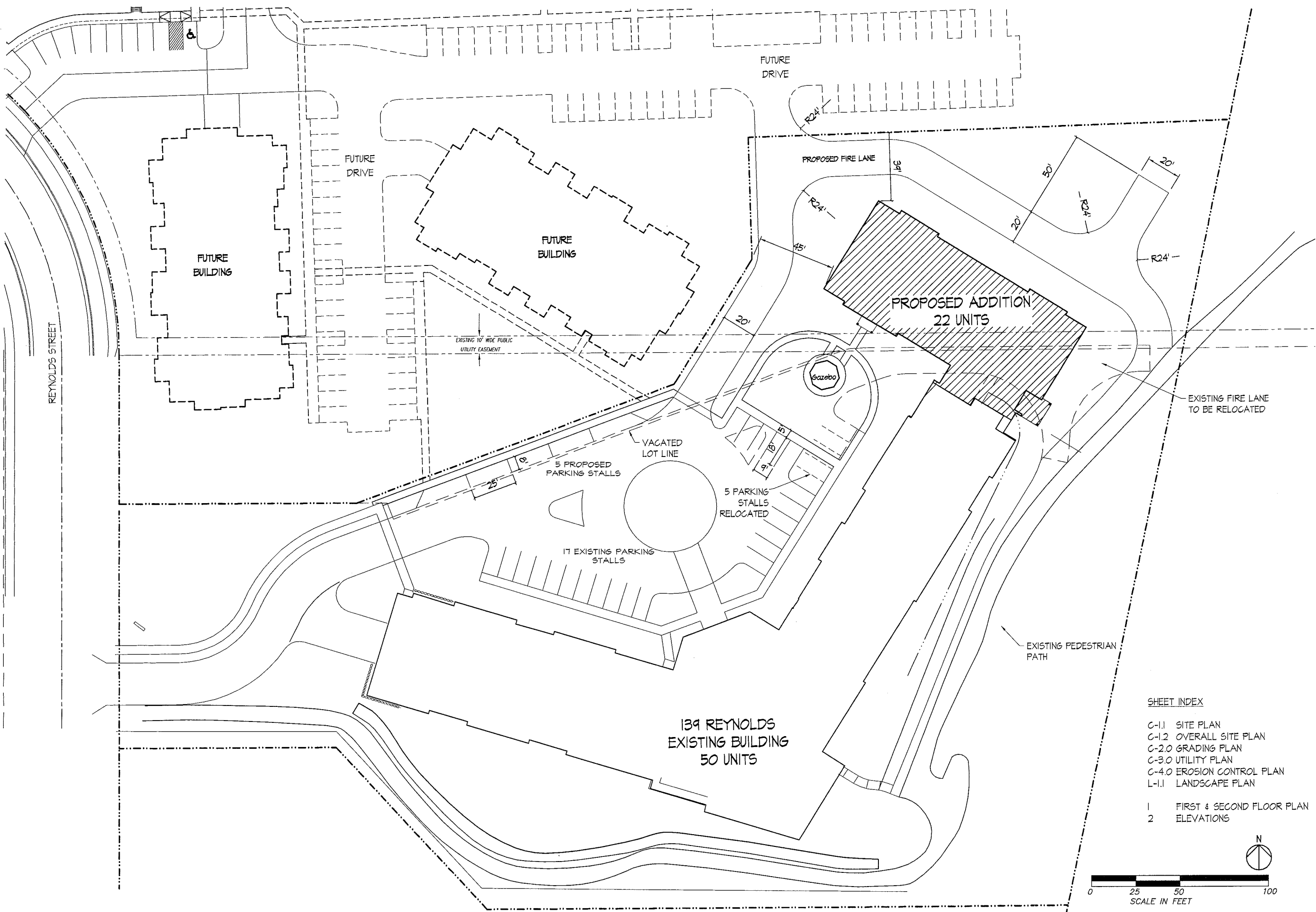
Revisions
 CSM & Amended SDP-SIP Submittal- January 14, 2004

Project Title
**Angelus of
 Cottage Grove
 Addition**

139 E. Reynolds Street
 Drawing Title
Site Plan

Project No. **0841** Drawing No. **C-1.1**

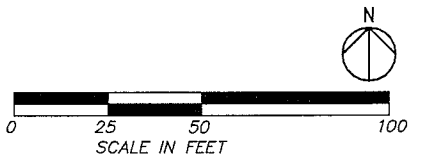
This document contains confidential or proprietary information of Knothe & Bruce Architects. If you are not the intended recipient, please do not disseminate, distribute, use, or act on the information contained herein. If you have received this document in error, please notify the sender immediately. Knothe & Bruce Architects is a Limited Liability Company of Wisconsin.

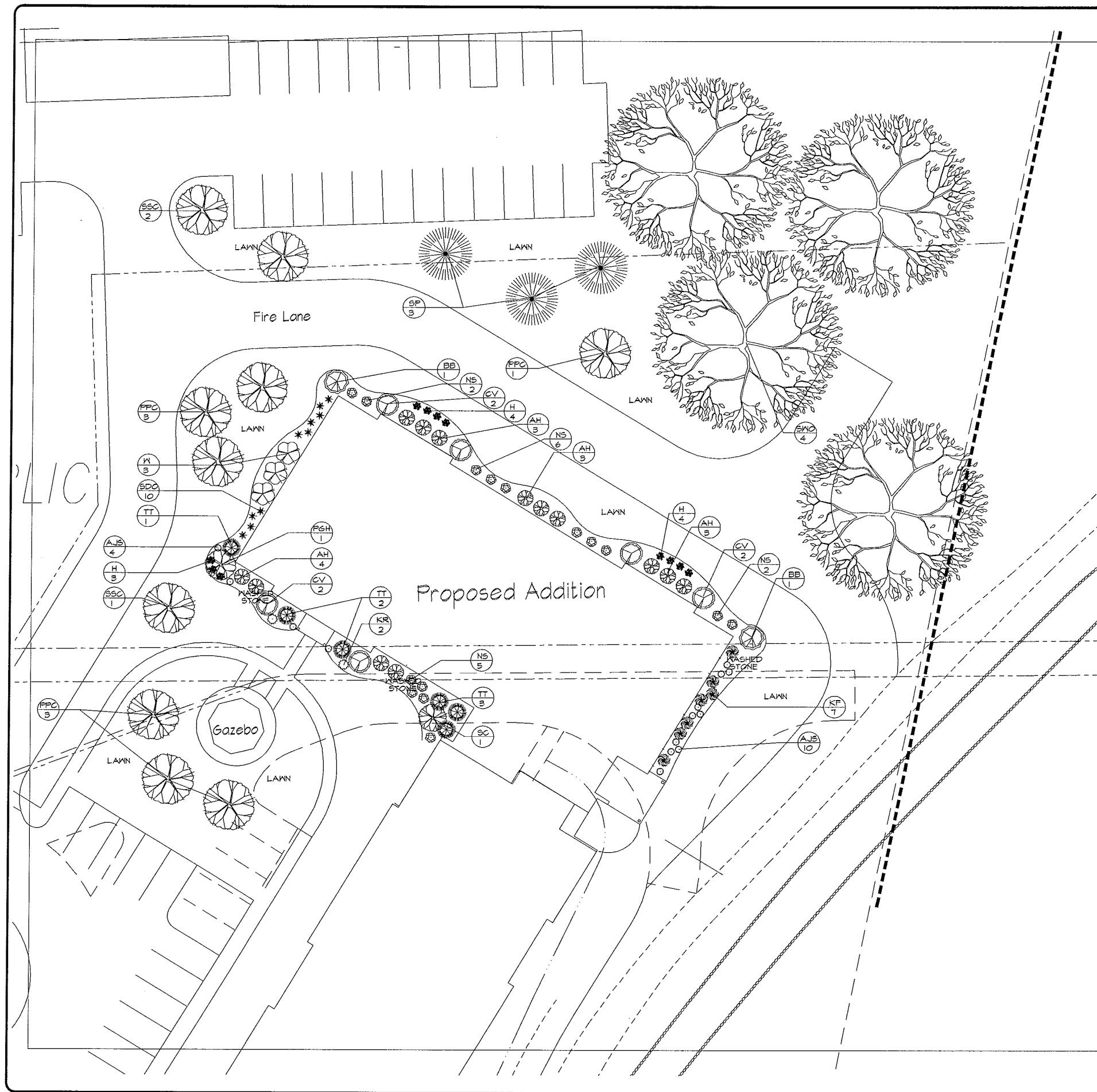


SHEET INDEX

- C-1.1 SITE PLAN
- C-1.2 OVERALL SITE PLAN
- C-2.0 GRADING PLAN
- C-3.0 UTILITY PLAN
- C-4.0 EROSION CONTROL PLAN
- L-1.1 LANDSCAPE PLAN

- 1 FIRST & SECOND FLOOR PLAN
- 2 ELEVATIONS





**VILLAGE OF COTTAGE GROVE
LANDSCAPE PLAN REQUIREMENTS**

Article V. Landscaping and Bufferyard Regulations, Zoned MR-12
* Section 325-502A Landscaping Requirements for Foundations

Rational: 40 points per 100 LF of Building Foundation
Requirement: 45 LF * 40 pts. = 180pts req'd

Solution:

2	Medium Deciduous Trees (6') @ 15 pts.	30
21	Tall Deciduous Shrubs (36") @ 5 pts.	105
3	Medium Deciduous Shrubs (24" H) @ 5 pts.	15
17	Low Deciduous Shrubs (18" H) @ 1 pt.	17
0	Tall Evergreen Trees (5' H) @ 40 pts.	0
6	Medium Evergreen Shrubs (18" H) @ 5 pts.	30
0	Low Evergreen Shrubs (12" H) @ 3 pts.	0
Points Achieved		181

* Section 325-502B Landscaping Requirements for Developed Lots
Rational: 20 points per 1000 SF of Gross Floor Area/addition
Requirement: 8747 SF * 20 pts. = 174 pts req'd

Solution:

1	Climax Tree (2 1/2" Caliper) @ 75 pts.	75
0	Tall Evergreen Trees @ 40 pts.	0
7	Tall Deciduous Trees @ 15 pts.	105
Points Achieved		180

* Section 325-502G Landscaping Requirements for Street Frontages
Rational: 40 points per 100 LF of Street Frontage
Requirement: 0 LF * 40 pts. = 0 pts req'd

Solution:

0	Climax Trees (2 1/2" Caliper) @ 75 pts.	0
0	Medium Deciduous Trees (6' H) @ 15 pts.	0
0	Medium Deciduous Shrubs (24" H) @ 5 pts.	0
0	Low Deciduous Shrubs (18" H) @ 1 pt.	0
0	Med. Evergreen Shrubs (18" H) @ 5 pts.	0
0	Low Evergreen Shrubs (12" H) @ 3 pts.	0
Points Achieved		0

* Section 325-502D Landscaping Requirements for Paved Areas (Fire In)
Rational: 60 points per 10000 SF of Paved Area
Requirement: 17288 SF * 60 pts. = 1037 pts req'd

Solution:

3	Climax Tree (2 1/2" Caliper) @ 75 pts.	225
3	Tall Deciduous Trees (1 1/2" Caliper) @ 50 pts.	150
0	Low Deciduous Trees (4' H) @ 10 pts.	0
3	Tall Evergreen Trees (5' H) @ 40 pts.	120
0	Low Evergreen Shrubs (12" H) @ 3 pts.	0
0	Medium Deciduous Shrubs (24" H) @ 5 pts.	0
Points Achieved		495

PLAN NOTES

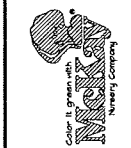
- A) All lawn areas to be fine graded, fertilized w/ a 10-10-10 fertilizer at a rate of 1# N / 1000 sq. ft. and seeded w/ Madison Park seed blend at a rate of 4 lbs. per 1000 sq. ft. and mulched w/ chopped wheat straw.
- B) Individual trees and shrub groupings found along perimeter of property as well as those found within lawn areas to receive bark rings and bark beds consisting of a mixture of hardwood shredded bark mulch spread to a minimum 4" depth (4' wide around specimen trees).
- C) Plant beds adjacent to building foundation to be mulched with 1/2" local washed gravel, spread to a 2-3" depth over fabric weed barrier and edged with Dmax pro edging.
- D) All topsoil to be in place to w/in +/- 1" of finish before finish landscaper starts.
- E) Owner assumes all responsibility for care and life of lawn and vegetation.

PLANTING SCHEDULE

Symbol	Plant Name	Quantity	Size
Shade and Ornamental Trees			
SPC	Shamp White Oak	4	1 1/2" BB
FPC	Pink Profusion Fl Crabapple	7	1 1/2" BB
SPC	Spring Snow Fl Crabapple	9	1 1/2" BB
SC	Sargent's Fire Fl Crabapple	1	4" C6
PGH	Poa dea Hydrangea Tree	1	#1 C6
Deciduous Shrubs			
CV	Chiquita Viburnum	6	#5 C6
NS	Neon Flash Spirea	15	#5 C6
N	Wine and Roses Weigela	5	#5 C6
KR	Knock Out Rose	2	#5 C6
AH	Annabelle Hydrangea	15	#5 C6
BB	Kinged Euonymus	2	#1 C6
Evergreens			
SP	Scotch Pine	5	5" BB
TT	Toumton Yew	6	18" BB
Perennials			
AJS	Autumn Joy Sedum	14	#1 C6
H	Francis Williams Hosta	11	#1 C6
NS	May Night Salvia	0	#1 C6
SDO	Stella D'Oro Daylily	10	#1 C6
P	Pachysandra groundcover	0	#1 C6
KF	Karl Foerster Grass	7	#1 C6

The design is intended to be a guide only. The contractor shall be responsible for the construction of the landscape plan. The contractor shall be responsible for the construction of the landscape plan. The contractor shall be responsible for the construction of the landscape plan.

MCKAY NURSERY COMPANY
PO BOX 185, 780 S. MONROE ST., WATERLOO, MI 48944
432-418-3131
WWW.MCKAYNURSERY.COM

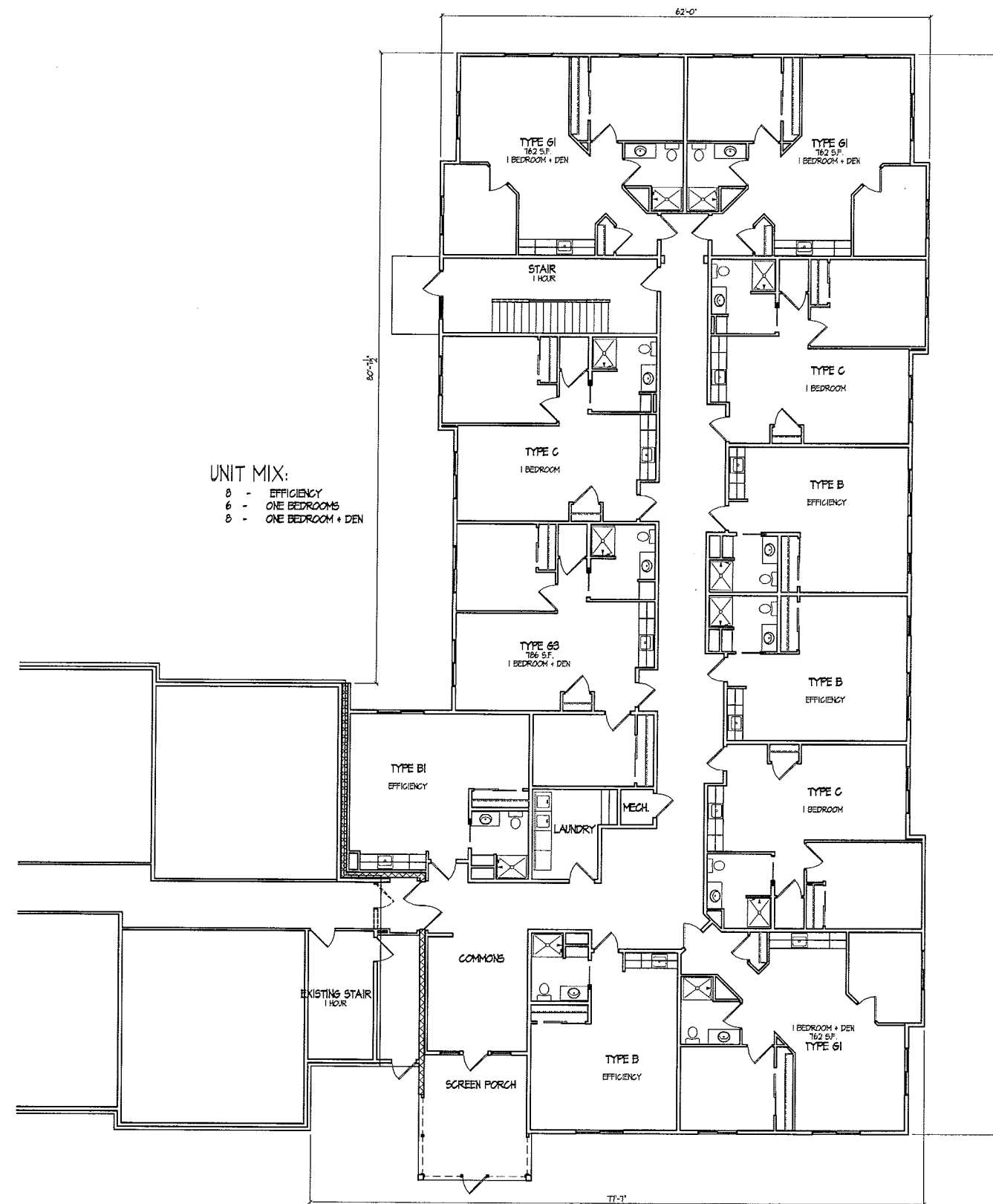


LANDSCAPE PLAN
HUSTON ANGELUS ADDITION
EAST REYNOLDS ST., COTTAGE GROVE, MI

DESIGN BY
S. L. DEVAULT
PLANNED BY
S. L. DEVAULT
DATE
JANUARY 15, 2009
SCALE
1" = 10'-0"
SHEET NO.
HUSTONANGELUS10 SCALE 36

Consultant

Notes



FIRST & SECOND FLOOR PLAN
1/8" = 1'-0"

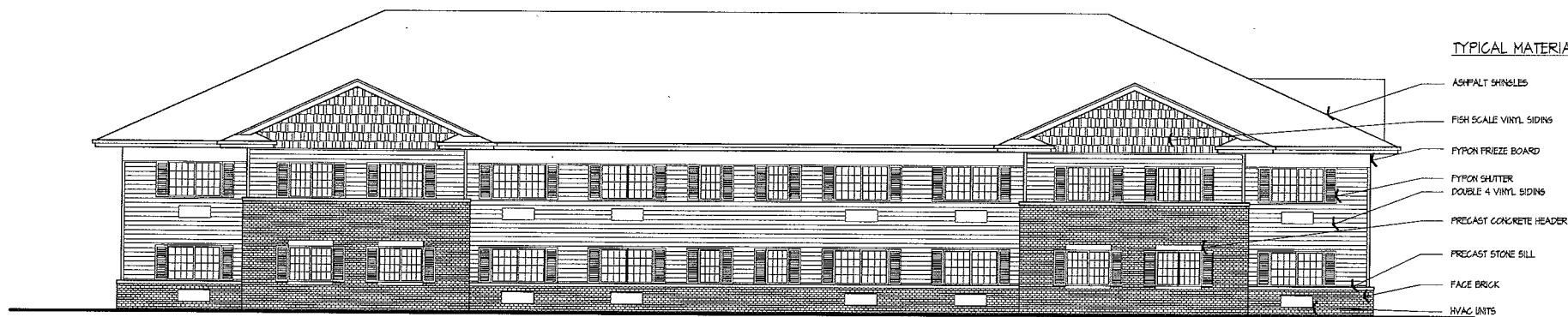
Revisions
 Concept Plan Review - Jan. 8, 2009
 Plan Commission Submittal - Jan. 14, 2009

Project Title
**Angelus of Cottage
 Grove Addition**

139 E. Reynolds Street
 Drawing Title
**First & Second
 Floor Plan**

Project No. Drawing No.
0841

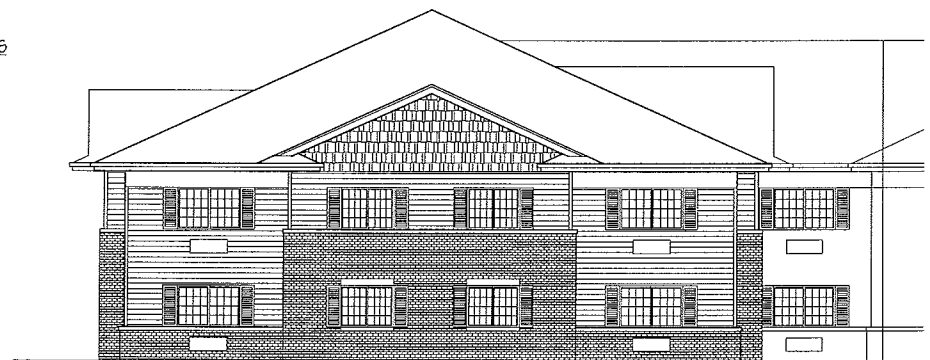
This document contains confidential or proprietary information of Knothe & Bruce Architects. Neither this document nor the information herein is to be reproduced, distributed, sold, or disclosed, either in whole or in part, without the written consent of Knothe & Bruce Architects. Knothe & Bruce Architects is a Limited Liability Company of Wisconsin.



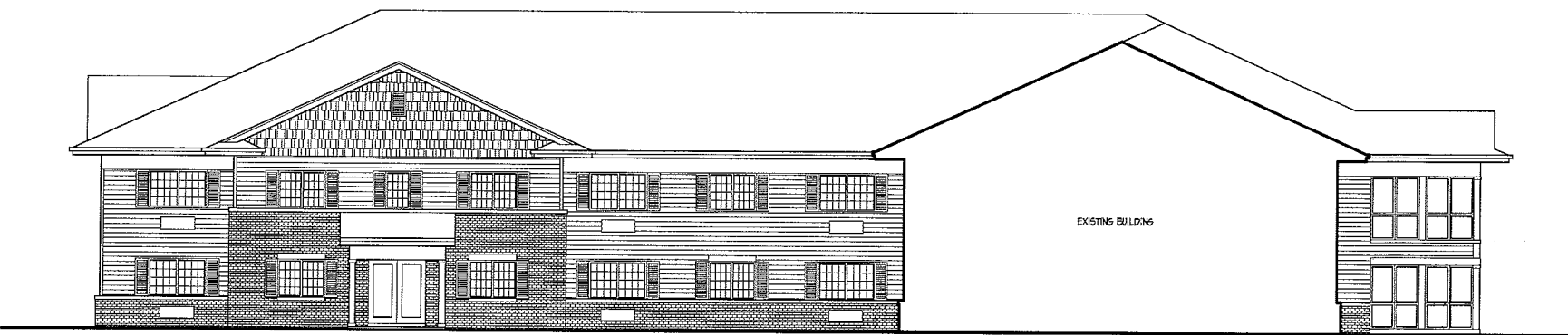
TYPICAL MATERIALS

- ASPHALT SHINGLES
- FISH SCALE VINYL SIDING
- PYPON FRIEZE BOARD
- PYPON SHUTTER
- DOUBLE 4 VINYL SIDING
- PRECAST CONCRETE HEADER
- PRECAST STONE SILL
- FACE BRICK
- HVAC UNITS

NORTH ELEVATION
1/8" = 1'-0"



WEST ELEVATION
1/8" = 1'-0"



SOUTH ELEVATION
1/8" = 1'-0"



EAST ELEVATION
1/8" = 1'-0"

Revisions
Concept Plan Review - Jan. 8, 2009
Plan Commission Submittal - Jan. 14, 2009

Project Title
Angels of Cottage Grove Addition

139 E. Reynolds Street
Drawing Title
Elevations

Project No. Drawing No.
0841 2

This document contains confidential or proprietary information of Knothe & Bruce Architects. Neither the document nor the information herein is to be reproduced, distributed, used, or disclosed, in whole or in part, without the written approval of Knothe & Bruce Architects. Knothe & Bruce Architects is a Limited Liability Company of Wisconsin.